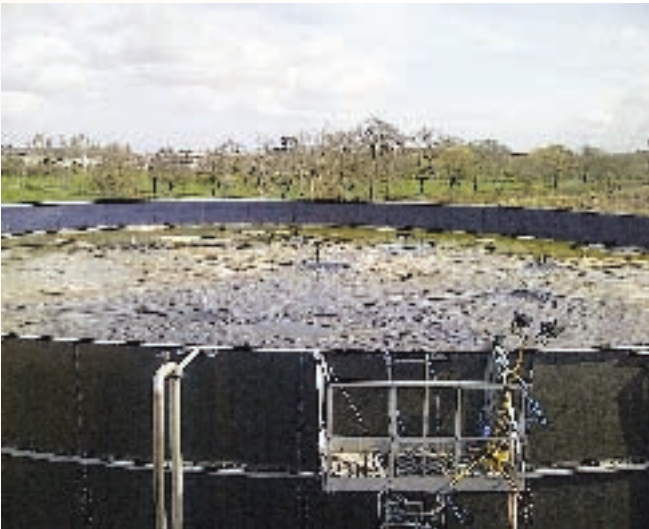


The Floating Cover is a practical alternative for a roof on an above ground circular tank. The consideration to opt for a floating cover can be an ambiguous one: it requires less investment and it can also be a durable alternative if your above ground circular tank is not strong enough to support a cover. The floating cover is floating on the manure and is moving, in accordance with the varying volume of the manure, up and down through a simple system.



PRODUCT FEATURES

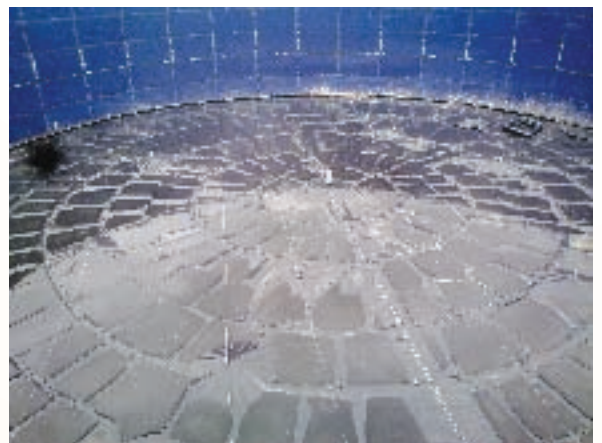
The Floating covers are of exactly the same quality as the roofs. They are produced from Nicoflex® 800 HSPO KIWA certified foil. To put it briefly, as well with the quality as with the security everything is all right. If it has to be made-to-measure, Linton floating covers are produced based on your specifications. To put it briefly, made-to-measure. All floating covers will be fitted by the professionals of Linton in 'no time' in your above ground circular tank. Including the accompanying simple construction to let the cover float optimally on the manure.

MADE TO MEASURE

Each floating cover is produced custom made. Available sizes differ from 9 up to 35 m. diameter. Additionally a mixing hatch can be fitted in the cover, so the silo can be mixed with mixer through the hatch. Existing mixers should possibly be relocated underneath a mix hatch, so the cover gets space to move up and down.

A DEAL IS A DEAL

It is always good to know: you will receive, in advance, a crystal clear, decent offer and you can be sure that all activities will be done accurate, efficient and perfect. This way you can not only build with us, but rely on us to.



KIWA CERTIFICATE

Floating covers from Linton have the same quality as our tensioned covers. Nicoflex 800® HSPO is a Kiwa certified foil and the cover is completely fitted following the Dutch BRM (Dutch standard for slurry storage).



LINTON

TENSIONED ROOF

TENSIONED COVER

The Tensioned cover is the ideal solution for covering your above ground circular tank. The roof can be placed on almost every type of silo, for instance steel, concrete and even wood. The materials used to construct the cover make perfect for usage on manure storage systems.

PRODUCT FEATURES

The heart of the cover is the centre column. The standard column used is a tropical hard wood pole. That will last for hundreds of years. This is bolted to the floor of the tank using a stainless steel bracket. A stainless steel cone is put on top of the column and the material is then bolted in place. Vents in the cover allow gases to escape. The foil used for the actual tensioned cover is a polyester weave, coated on both sides with a layer of PVC. Total weight of the foil is 850 gr. /m². Standard colour of the foil is grey, delivery in green is optional. Special bands are welded on the foil. These bands are connected to the top dish with stainless steel buckles. To tension the cover, a galvanized or stainless steel, bended tube is placed into the edging. Stainless steel ratchets are used to tension the cover. To inspect the silo, there will be placed one or more manholes in the cover. Different numbers, sizes and locations of the manholes are possible. Every cover is custom made to the tank where it has to be mounted on. The cover itself has a reference period of 10 years. Available diameters run from 8,0 up to 40,0 meters, depending on snow and wind load.



FINALLY

Covers for above ground slurry tanks increase the actual slurry storage of the tank by one-fifth, by keeping the rain out. It keeps in nitrogen that could otherwise be lost to the environment and reduces the cost of spreading rain water normally collected by the tank. Enables end-user to comply with the environmental permit for intensive farming. Environment agencies recommendation that all slurry stores are now covered.

Contact Linton for further information:

LINTON

4 Hallstown Rd, Upper Ballinderry, Lisburn, Co.Antrim
BT28 2NE

Tel: 02892 621317

Email: info@lintonsolutions.com

AUTHORISED DEALER

We at Linton will immediately provide you with an estimated cost of a system that will suit your Slurry storage system and save you money. Site visit may be required.